

CLARITY ELECTRIC PROJECTOR SCREEN

SYNCHRONOUS MOTOR

THANK YOU FOR CHOOSING OUR PROJECTION SCREEN.
PLEASE READ THE MANUAL BEFORE USING.



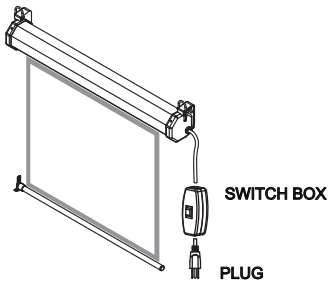
110V 220V NEW

Thank you for choosing our screen.

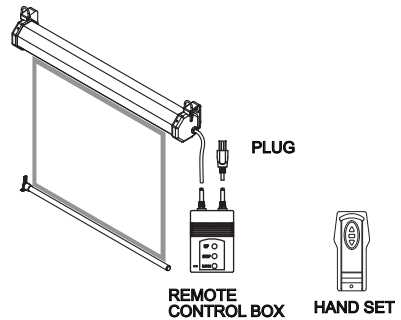
Read this manual carefully to ensure proper usage, you may also find the solution if you have problems.

IMPORTANT ATTENTION the installation of the screen, the electric connections, the setting of the limit switches, must be made from trained engineer only.

THE SHAPE OF SCREEN

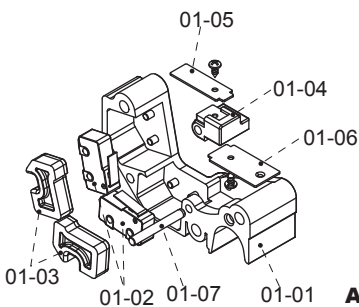


MOTORIZED SCREEN WITH SWITCH BOX.

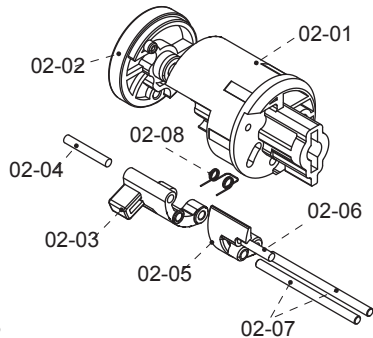


MOTORIZED SCREEN WITH REMOTE CONTROL.

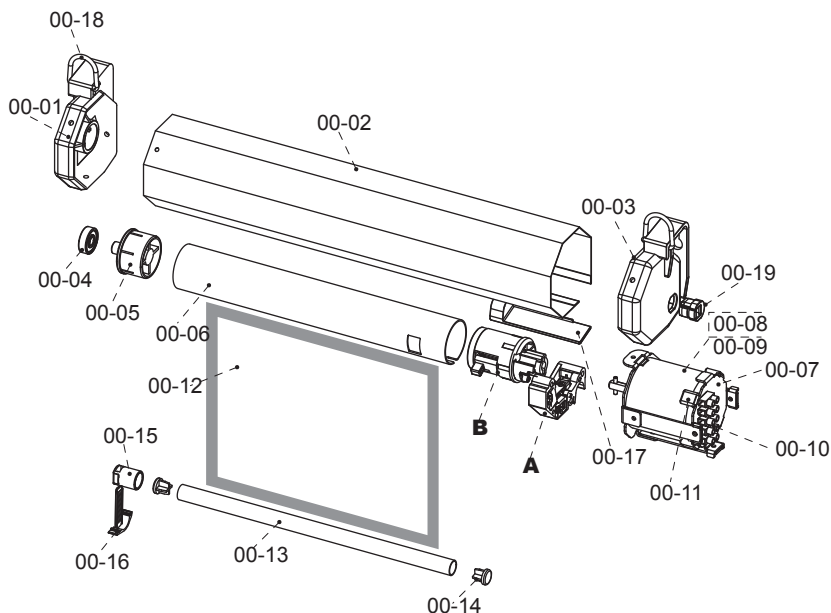
SPARE PARTS LIST FOR MOTORIZED SCREEN



A



B



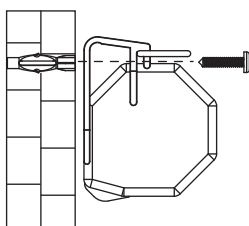
00-01 LEFT END CAP
 00-02 SCREEN HOUSING
 00-03 RIGHT END CAP
 00-04 BEARING
 00-05 ROLLER END CAP
 00-06 ROLLER
 00-07 MOTOR HOLDER
 00-08 SYNCHRONOUS MOTOR
 00-09 LATCH
 00-10 CONNECTION
 00-11 ABSORBER COVER
 00-12 SCREEN FABRIC
 00-13 PULL BAR
 00-14 RUBBER END CAP
 00-15 SLAT BAR BLOCK
 00-16 LOCK PIECE
 00-17 ADJUSTMENT COVER
 00-18 RING
 00-19 CORD FASTENER

01-01 MICRO SWITCH
 01-02 LIMIT SWITCH
 01-03 MICRO SWITCH COVER
 01-04 CONTACT CHIP SETTING
 01-05 CONTACT CHIP 1
 01-06 CONTACT CHIP 2
 01-07 LOCATING SHAFT OF CONTACT CHIP

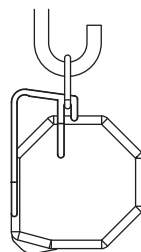
02-01 ROLLER ROTOR
 02-02 ENDCAP
 02-03 SWING ARM 2
 02-04 SOLID AXLE 2
 02-05 SWING ARM 1
 02-06 SOLID AXLE 1
 02-07 SWING ARM AXES
 02-08 TORSIONAL SPRING

INSTALLATION INSTRUCTION

- Unpack the screen carefully, be sure the screen is in good condition, check all the accessories are packed inside the carton.
- Check the voltage and frequency marked on the screen is in accordance with the local power supply. It is suggested only to use the screens indoor under normal temperature and humidity.
- Refer the fig below to fix the screen to the wall or to the ceiling.



FIX THE SCREEN TO THE WALL



FIX THE SCREEN TO THE CEILING

VOLTAGE AND FREQUENCY

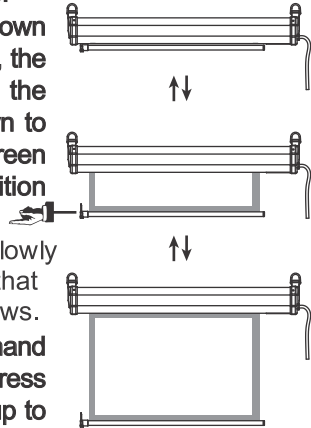
Choose the voltage according to the local requirement: 110V/60Hz or 220V/50Hz.

INSTALLATION NOTE

- Must be installed from direct sunlight.
- Proper ventilation place.
- Proper dampness.
- Clear place.
- Avoid violent jarring.
- Avoid the direct air current from air-condition, heater etc. Do not expose the screen in the High or Low temperature condition.

OPERATION INSTRUCTION

- Please take the block off before your use.
- Plug in the power supply. Press the down button of the switch box or the hand set, the screen will go down smoothly. Press the stop button when the screen goes down to the expected position, otherwise the screen will stop at the lower limited position automatically.
- If necessary pull down smoothly and slowly in the middle of the slat bar to ensure that the proper amount of black border shows.
- Press the up button of the switch or the hand set, the screen will go up smoothly. Press the stop button when the screen goes up to the expected position, otherwise the screen will roll back to the housing.



ATTENTION

- Do not over-operate screen or it will reduce useful life of the screen.
- Do not pull the control wires to avoid disconnection and danger.
- Keep power cord and plug in good condition.
- Turn off power supply when the screen will not be used for a long period of time.

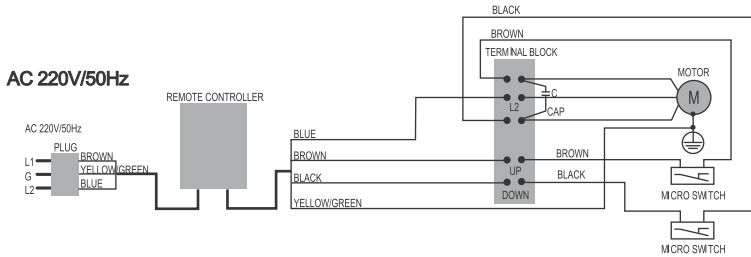
TROUBLE SHOOT

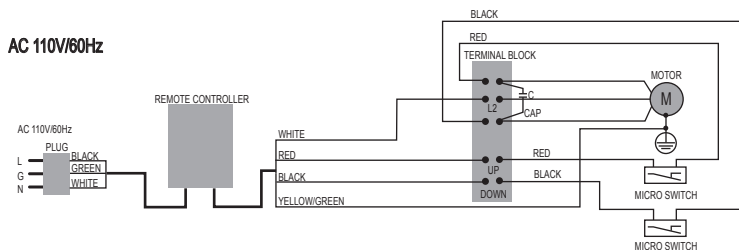
Always call a qualified engineer for maintenance to avoid danger.
Always unplug the power supply before disassembling the screen.

- Check whether or not power is provided to screen.
- Check for a broken fuse.
- Check wire connections (screen endcap on motor end)

11

Diagram for screen with wall control and remote controller.



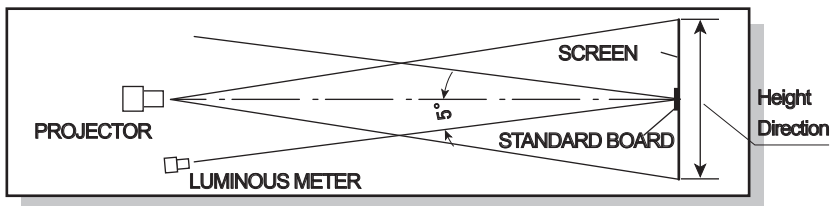


TECHNICAL DATA FOR FABRIC

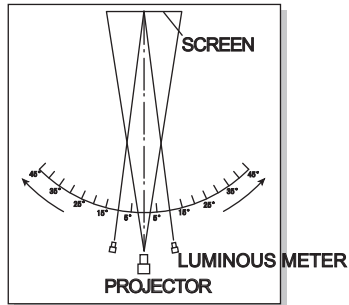
- **Matte White Screen**
Gain: 0.9
Viewing Angle: $>160^\circ$
High color rendering, high resolution.
- **Glass Beaded Screen**
Gain: 2.2
Viewing Angle: $>30^\circ$
High color rendering, high resolution.

HOW TO MEASURE THE TECHNICAL DATA OF REFLEX SCREEN

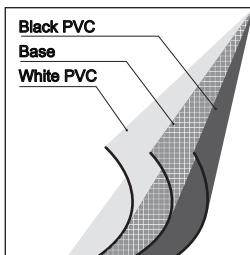
- **Gain Measurement:** refer the fig below
Standard: JB/T8389 issued by Ministry of Machinery Industry



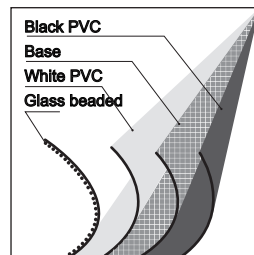
Viewing Angle Measurement: refer the fig below
Standard: JB/T8389 issued by Ministry of Machinery Industry



SCREEN FABRIC



MATTE WHITE SCREEN SURFACE



GLASS BEADED SCREEN SURFACE

