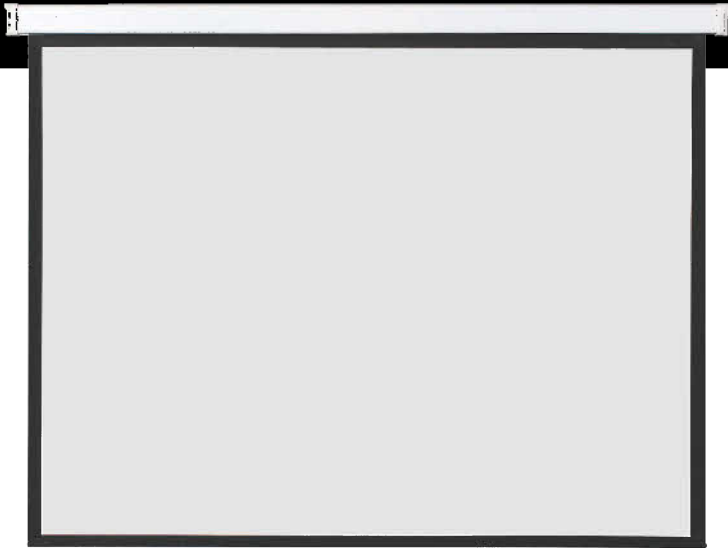


Motorized Electric Projection Screen



Thank You For Choosing Our Projector Screen.
Please Read This Manual Carefully Before Using Your New Screen.

IMPORTANT SAFETY INSTRUCTIONS

When using your photographic equipment, basic safety precautions should always be followed, including the following:

- Read and understand all instructions before using.
- Close supervision is necessary when any appliance is used by or near children. Do not leave appliance unattended while in use.
- Do not operate appliance with a damaged cord or if the appliance has been dropped or damaged - until it has been examined by a qualified serviceman.
- Position the cord so that it will not be tripped over, pulled, or contact hot surfaces.
- For a cord-connected unit, do not use an extension cord.
- Always unplug appliance from electrical outlet before cleaning and servicing and when not in use. Never yank cord to pull plug from outlet. Grasp plug and pull to disconnect.
- Let appliance cool completely before putting away. Loop cord loosely around appliance when storing.
- To reduce the risk of electric shock, do not disassemble this appliance, but take it to a qualified serviceman when service or repair work is required. Incorrect reassembly can cause electric shock when the appliance is used subsequently.
- The use of an accessory attachment not recommended by the manufacturer may cause a risk of fire, electric shock, or injury to persons.
- Connect this appliance to a grounded outlet.

SAVE THESE INSTRUCTIONS

IMPORTANT! PLEASE READ FIRST.

Thank you for selecting our professional motorized electric projector screen. We know you are ready to get started using your screen, but we ask that you please take a few minutes to read through this manual to ensure proper installation and use of your new screen. With proper care and maintenance you should experience years of trouble free use.

CAUTION

- The wiring diagrams included are for reference only, and only a licensed electrician should attempt to make any adjustments or changes to the wiring of this screen.
- Attempt to service any concealed portion of this screen during the warranty period will void your warranty.
- This Screen is set to operate in a 110V/60Hz environment. **Do not operate in a 220V/50Hz region.**

CONTENTS

Please notify your point of sale retailer immediately if you are missing any items.

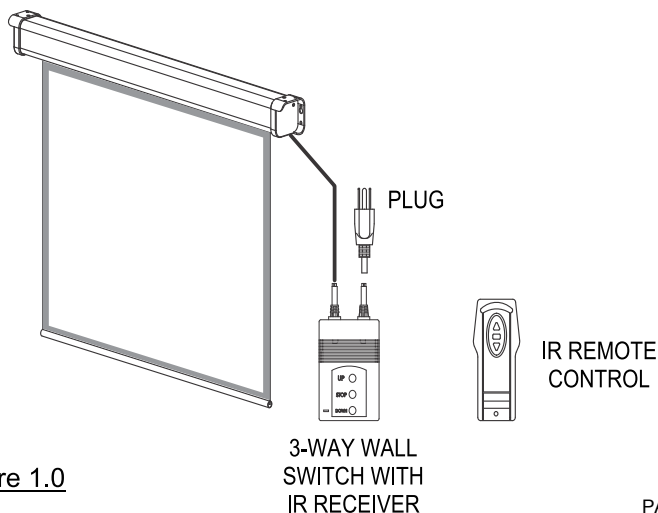


Figure 1.0

INSTALLATION

- Unpack the screen carefully and verify that the screen was not damaged during shipment. (If the screen was damaged during shipping please initiate a damage claim with the freight carrier immediately.)
- Check the contents of the box against **Figure 1.0** to be sure that nothing is missing.
- Make sure that you are working in a 110V/60Hz region.
- Avoid violent jarring of the screen, handle with reasonable care.

INSTALLATION DOs AND DON'Ts

- DO install the screen using hardware that is appropriate for bearing the weight of your screen. (Inquire with hardware store for help selecting the right mounting hardware for your specific installation)
- DO mount the screen into wall studs if possible.
- DO mount the screen where it will receive proper ventilation, but not direct air flow.
- DO NOT install the screen in a highly humid or high temperature environment. (Try to install in an environment with steady temperature and humidity that is within normal range.)
- DO NOT install the screen where it will receive direct sunlight.
- DO NOT install the screen where it will receive direct air flow (i.e. Heating or air conditioning vents)

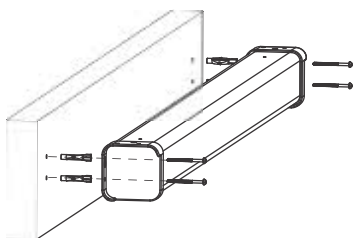


Figure 1.1: Mount to wall.

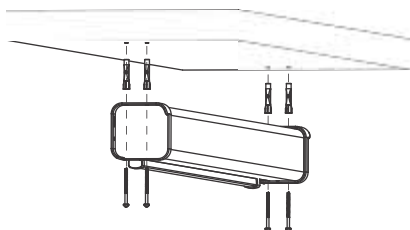


Figure 1.2: Mount to Ceiling

SCREEN OPERATION

Plug In The Screen




- Plug the screen power cord to a grounded 110V/60Hz power outlet.

We recommend plugging your screen into a protected power source. Using a surge protector, line conditioner, or UPS will help protect your investment from power surges.

3-Way Switch Operation (fig. 1.3)

- To lower the screen press the DOWN button. The screen will continue to go down until you press the stop button, or until it has gone down all the way.
- To put the screen back up simply press the UP button. Again the screen will go up until it has reached its upper limit and then it will stop automatically.
- Pressing the STOP button while the screen is moving UP or DOWN will stop the screen at its current position.
- You will find the screen motor operates very smoothly and quietly.

Infra Red (IR) Remote Operation (fig. 1.5)

- To lower the screen press the DOWN  button. The screen will continue to go down until you press the stop button, or until it has gone down all the way.
- To put the screen back up simply press the UP  button. Again the screen will go up until it has reached its upper limit and then it will stop automatically.
- Pressing the STOP  button while the screen is moving UP or DOWN will stop the screen at its current position.

NOTE: If at some point the screen is not straight, pull down on the pull bar evenly and slowly to correct the screen angle.

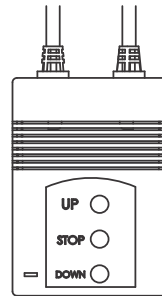


Figure 1.3: 3-Way Switch

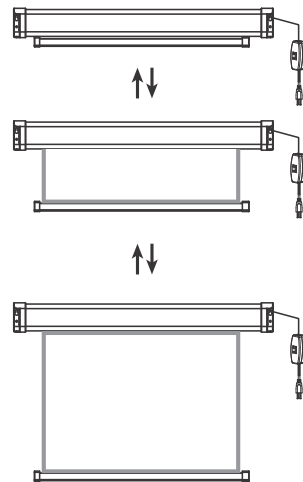


Figure 1.4: Screen Motion

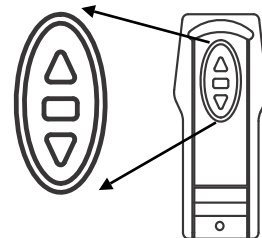


Figure 1.5: IR Remote

READ FIRST

NOTE: The remote is fully function right out of the box. You **DO NOT** need to program the remote before using your new projector screen. The following instructions for programming the remote are optional and are used to turn on or off advanced features that many users will not find necessary.

PROGRAMMING THE REMOTE CONTROL

Putting the Remote Receiver in Setup Status

- First, you must place the remote receiver into *setup status*. To do this press the reset switch by inserting a small pin (i.e. Un-bent paper clip) into the “setup switch hole” of the IR Receiver/Wall Switch (fig 1.6). You must press for 6 seconds.
- After 6 seconds the IR Receiver/Switch Box will beep three times (du-du-du). This indicates that the box has been reset.
- Now you must press the *setup switch* again and this time you will hear two beeps (du-du) indicating that you have successfully set the remote receiver into *setup status*.

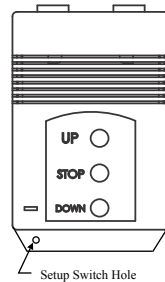


Figure 1.6: Setup Switch

Operations You Can Perform While In Setup Status

- 1) Lock the remote control handset
- 2) Lock the wall switch controls
- 3) Match additional remotes to the receiver

Locking The Remote Control Handset

- Enter setup status (see above)
- Press the STOP button on the remote control to lock (disable) the UP and DOWN buttons on the remote.
- To unlock (re-enable) the UP and DOWN buttons press STOP or unplug the screen and plug it back in.

Locking The Wall Switch Controls

- Enter setup status (see above)
- Press the STOP button on the wall switch to lock (disable) the UP and DOWN buttons on the remote.
- To unlock (re-enable) the UP and DOWN buttons press STOP or unplug the screen and plug it back in.

Matching Additional Remotes to the Receiver

- Enter setup status (see above)
- Press the UP button of the Wall Switch or a working Remote Control to place the Remote Receiver into *matching mode*. You will hear two beeps (du-du) to let you know you are in *matching mode*.
- While in *matching mode* press any button of the remote you wish to match and you will hear a single beep (du) indicating that the new remote has been matched to the receiver.
- You can match up to 5 remote controls using this method.

Using the Remote Control Memory Function

The remote control can be used to set a screen position so that the screen will automatically stop at a set point. This is helpful if you need the screen to go partially down, but not all the way down, in order for your image to be vertically centered on the screen.

Setting the Screen Memory Using the Remote Control

- Press the DOWN button of the remote. When the screen has reached the position that you wish to set as the memorized stop position press both the STOP and DOWN buttons at the same time. The screen will remember this position and stop here automatically in the future.

Clearing the Screen Memory Using the Remote Control

- Press the UP and DOWN buttons at the same time to clear the screen memory. Now the screen will no longer stop at the memorized position.

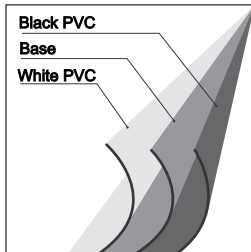
REMOTE CONTROL TROUBLESHOOTING

- **Remote control receiver is not working and the LED indicator light is not lit.** *Check that the screen is plugged in. If the screen is plugged in then the fuse may be blown in the control box. Unplug the screen and carefully snap open the control box and check to see if the relay fuse is blown. Take the fuse to your local hardware or electric supply store and ask them for a 1 Amp replacement fuse.*
- **Remote control receiver LED indicator light is lit, but the remote control handset is not working.**
 - *Try replacing the remote control's battery.*
 - *Try matching the remote to the receiver (see previous page)*
 - *Replace the remote control (contact seller)*
- **UP and DOWN buttons are not working.** *They may be locked. To release the lock unplug the screen and then plug it back in.*
- **The screen does not go down all the way.** *The memory may need to be cleared. Clear the memory (see above) and try again.*

SPECIFICATIONS & DIAGRAMS

Screen Surface

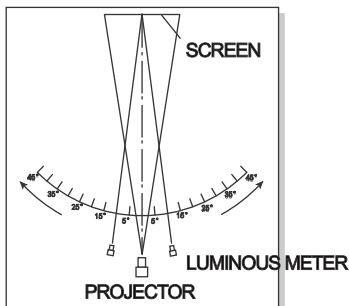
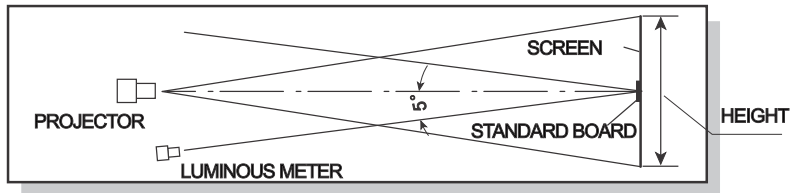
Screen Fabric



Matte White
Gain: 0.9
Viewing Angle: $>160^\circ$
High Color Rendering, High Resolution

Gain & Viewing Angle Measurement

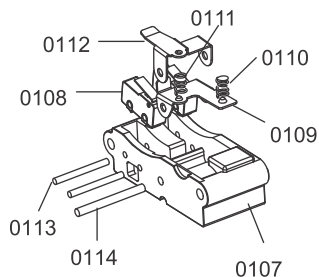
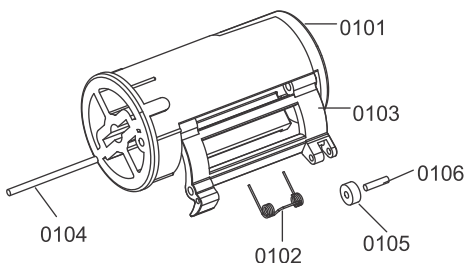
Standard: JB/T8389 issued by Ministry of Machinery Industry



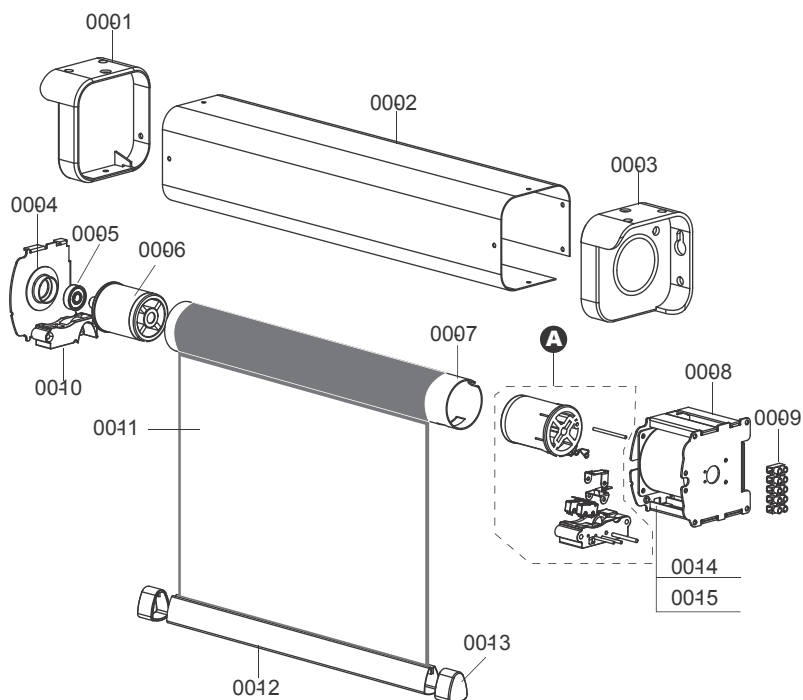
SPECIFICATIONS & DIAGRAMS

Spare Parts List for Motorized Electric Screen

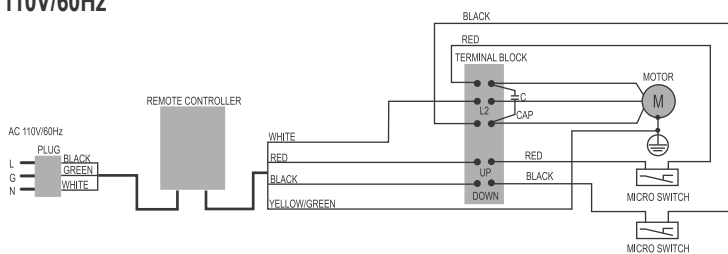
0001	LEFT END CAP	0101	ROLLER ROTOR
0002	SCREEN HOUSING	0102	SPRING
0003	RIGHT END CAP	0103	OSCILLATING LEVER
0004	BEARING MOUNTING	0104	SHAFT
0005	BEARING	0105	IDLER WHEEL
0006	ROLLER END CAP	0106	IDLER WHEEL SHAFT
0007	ROLLER	0107	RIGHT ORIENTING MOUNT
0008	MOTOR HOLDER	0108	LIMIT SWITCH
0009	CONNECTION	0109	UPPER FRAME
0010	LEFT ORIENTING MOUNT	0110	SPRING 1
0011	SCREEN FABRIC	0111	SPRING 2
0012	PULL BAR	0112	SHIFTER LEVER
0013	RUBBER END CAP	0113	FIXING SLAT
0014	SYNCHRONOUS MOTOR	0114	FIXING SLAT
0015	LATCH		



SPECIFICATIONS & DIAGRAMS



AC 110V/60Hz



SPECIFICATIONS & DIAGRAMS

Technical Data for Remote Control & IR Receiver Unit

- Input: 110VAC \pm 10% (60Hz)
- Output current to motor: \leq 1A
- Code error rate: \leq 1/1000000
- Remote control distance: \leq 20m (65.6 ft)
- Maximum number of remotes per IR receiver: 5 remotes
- Control signal: IR 38Khz
- Minimum and Maximum effective button press time: >0.3 sec to ± 120 sec

TROUBLESHOOTING & PROPER OPERATION

Always call a qualified engineer for maintenance to avoid possible danger associated with opening screen enclosures. Always unplug the screen before attempting any kind of service.

If your screen is not working check the following before calling for service:

- Check that the screen is getting power (test outlet with another device, I.e. Table lamp)
- Check that the fuse is not broken (fuse is located inside the wall switch).
- Check that the power cable has not been pulled out of the screen housing or out from the wall switch box.

If the remote control is not working properly try operating the remote closer to the screen and out of direct sunlight. Also, try replacing the remote battery.

OPERATING TIPS

- Do not over use the screen motor as this could reduce the overall life of the screen (I.e. Do not put screen up and down unless you are planning to use the screen.)
- Do not pull on the power cable.
- Ensure the power cord is securely plugged into a grounded outlet.
- Unplug the screen when it will not be used for long periods of time.
- Make use of a surge protector to help protect your screen from unwanted electrical damage.