

# ReTract Plus

## MANUAL WALL SCREEN

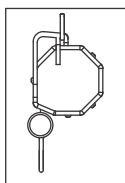
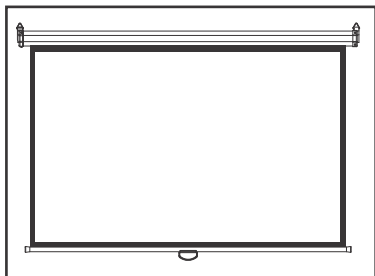
Thank You For Choosing Our Projector Screen.  
Please Read This Manual Carefully Before Using.



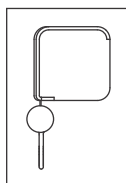
THANK YOU FOR CHOOSING OUR MANUAL WALL SCREEN!

All of our screens are inspected against very strict quality standards. We are confident that you will be fully satisfied with your selection. Please take a few minutes to carefully read this manual before using your screen. Enjoy!

## MANUAL WALL SCREEN



octagonal housing



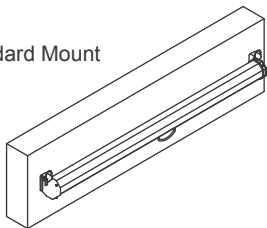
square housing

NOTE: Screens over 80" wide have a square housing while all other screens have an octagonal housing.

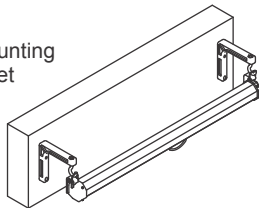
## SCREEN INSTALLATION & MOUNTING

- ▶ Remove the outer packaging carefully and inspect the package for damage. If the screen is damaged you need to immediately initiate a damage claim with the shipping carrier.
- ▶ Carefully and properly mount the screen on the wall or ceiling. We provide several optional mounting brackets that are available where you purchased your screen. Be sure to select appropriate mounting hardware. You may wish to consult a professional when selecting mounting hardware.

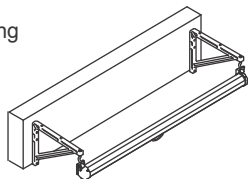
Standard Mount



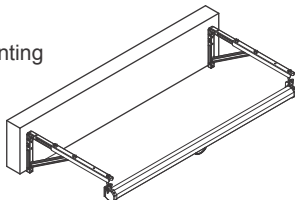
6" Mounting Bracket



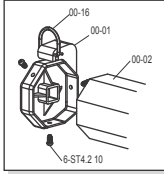
14" Mounting Bracket



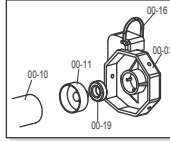
23" Mounting Bracket



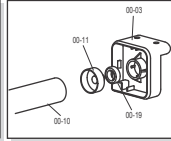
PARTS LIST FOR WALL SCREEN



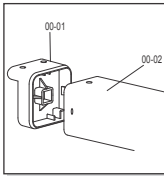
OCTAGONAL  
PLASTIC END CAPS



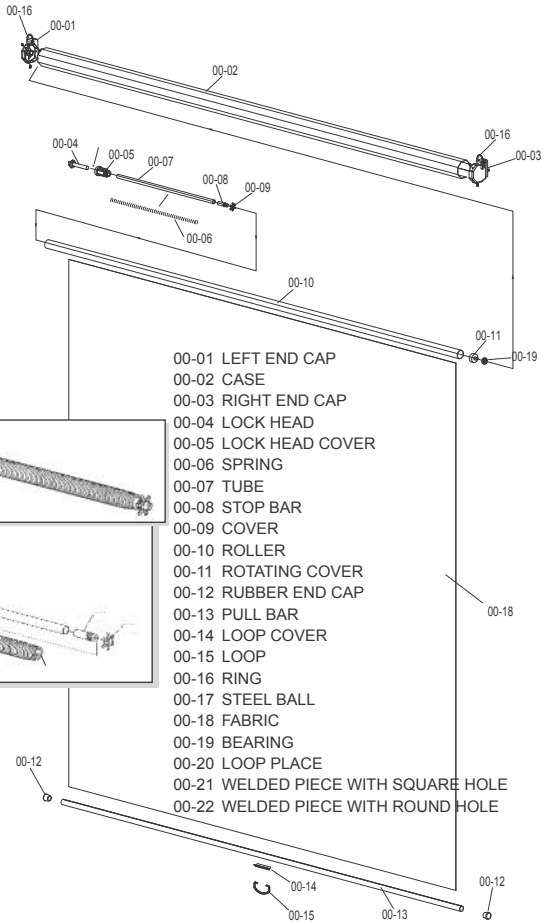
OCTAGONAL  
PLASTIC END CAPS



SQUARE PLASTIC END CAPS



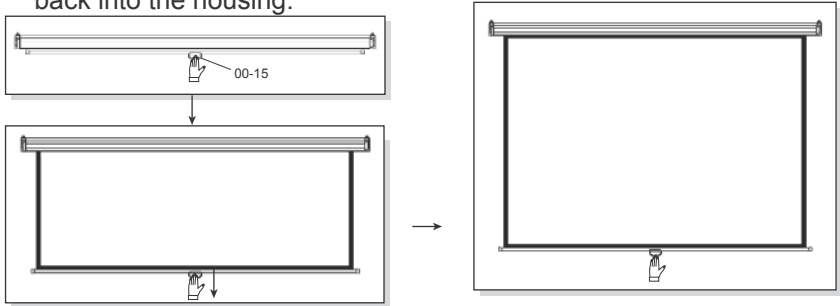
SQUARE PLASTIC END CAPS



- 00-01 LEFT END CAP
- 00-02 CASE
- 00-03 RIGHT END CAP
- 00-04 LOCK HEAD
- 00-05 LOCK HEAD COVER
- 00-06 SPRING
- 00-07 TUBE
- 00-08 STOP BAR
- 00-09 COVER
- 00-10 ROLLER
- 00-11 ROTATING COVER
- 00-12 RUBBER END CAP
- 00-13 PULL BAR
- 00-14 LOOP COVER
- 00-15 LOOP
- 00-16 RING
- 00-17 STEEL BALL
- 00-18 FABRIC
- 00-19 BEARING
- 00-20 LOOP PLACE
- 00-21 WELDED PIECE WITH SQUARE HOLE
- 00-22 WELDED PIECE WITH ROUND HOLE

## OPERATING INSTRUCTIONS

- ▶ Pull down the screen with the loop (00-15), stop at the desired position for one second, then release the loop(00-15).
- ▶ If the screen is not used for a long time, hold the loop (00-15), pull down SLIGHTLY then release it IMMEDIATELY, the screen will retract back into the housing.



## PROBLEM AND SOLUTION

- ▶ The following problems *may* occur after a long period of infrequent use.
  - **PROBLEM:** The screen does not retract all the way; a small part exposed.  
**Solution:** Tighten the spring one or two turns clockwise.

### Read entire solution before beginning!

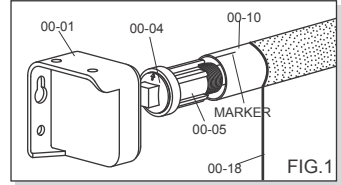
Loosen the three screws in the left end cap (00-01) and pull out the end cap slightly so that it is disconnected from the housing. **NOTE:** Be careful to not remove the end cap as this will allow the spring to unwind. Instead be certain to maintain contact with the end cap and the lock head (00-04). The lock head fits into the square socket on the inside of the end cap. With the end cap loose from the housing turn the end cap one or two revolutions clockwise to tighten the spring.

- **PROBLEM:** The screen will not retract; nearly the entire surface exposed.  
**Solution:** You must fully rewind the spring.

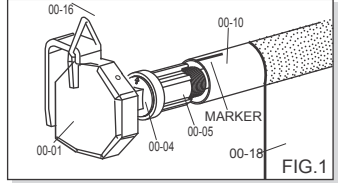
### Read entire solution before beginning!

Loosen the three screws in the left end cap (00-01) and completely remove it from the housing. Next mark the roller (00-10) with a pen where it matches up with the small triangle marking on the lock-head (00-04), and then remove the lock-head from the roller. This will allow the spring to fully unwind. Now put the lock-head back into the roller and match up the mark you made with the triangle mark on the lock-head. Next, align the end cap so that the hanging ring (00-16) is oriented up and place the end cap back onto the lock-head. Note, that the triangle mark on the lock-head will be pointing up in the same direction as the hanging ring. Now you are ready to rewind the spring. Turn the end cap clockwise to tighten the spring. Refer to the table on the next page for the proper number of turns for your screen size. When finished winding the spring fasten the end cap to the housing. Also, refer to Figure 1 and Figure 2 on the next page for diagrams to help clarify this procedure.

SCREEN SIZE	NUMBER OF TURNS
50" to 60"	7 to 8 turns clockwise
60" to 70"	8 to 10 turns clockwise
70" to 80"	10 to 12 turns clockwise
80" to 96"+	14 to 16 turns clockwise



SQUARE PLASTIC END CAPS



OCTAGONAL PLASTIC END CAPS

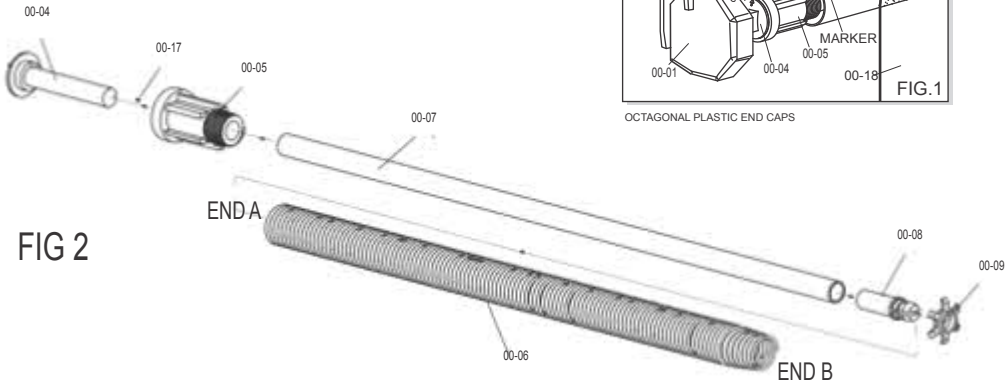


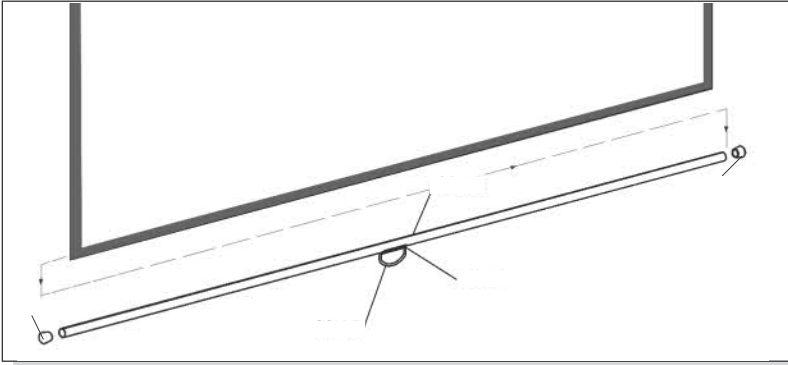
FIG 2

**NOTE:** If you need to re-assemble the spring and roller assembly follow these steps.

- Screw END A of the spring (00-16) to threaded part of the lock head cover (00-05) until tight.
- Insert END B of the spring (00-16) into the slot of the stop bar (00-08), then attach the cover (star shaped) (00-09) to the stop bar.
- The lock-head (00-04), tube (00-07), and the stop bar (00-08) are pre-assembled at the factory.

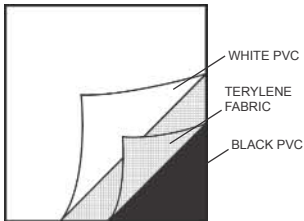
**PROBLEM:** Through misuse the pull loop or pull bar may become damaged.  
**Solution:** Replace the loop (00-15) and pull bar (00-13).

Remove the rubber end cap (00-12) from the pull bar, remove the pull bar, and replace with a new one. Make sure the screen surface is flat when you insert the rubber end caps to prevent wrinkles. It may be helpful to tape the sides of the screen to the wall before you insert the new pull bar and replace the caps.

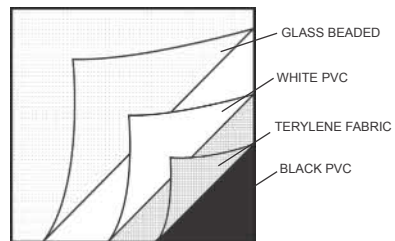


- **PROBLEM:** The screen surface will not retract at all, or the screen fell from the housing without being pulled.
  - Check to see if the connection is loose between the spring (00-06) and the lock head cover (00-05). If so, reassemble following the instructions on page 4.
  - Check if the lock head is damaged. If damage is present replace the lock head.

## SCREEN FABRIC



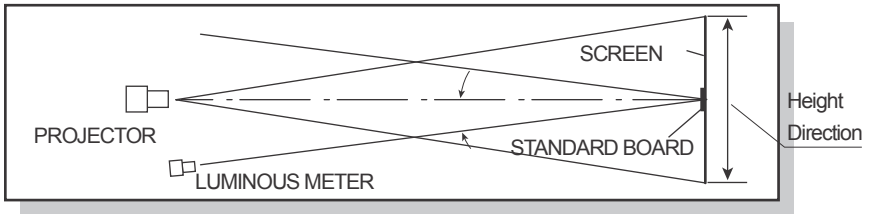
Matte White Screen Surface



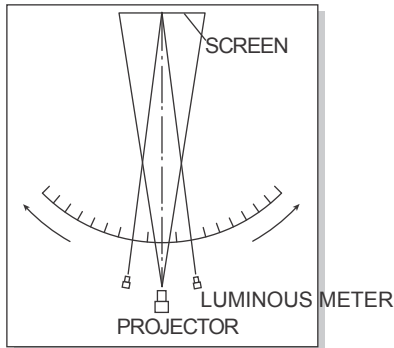
Glass Beaded Screen

### TECHNICAL DATA

- ▶ Matte White Screen  
Gain: 0.9  
Viewing Angle:  $>160^{\circ}$   
High color rendering, high resolution.
- ▶ Glass Beaded Screen  
Gain: 2.2  
Viewing Angle:  $>30^{\circ}$   
High color rendering, high resolution.
- ▶ Gain Measurement: refer the diagram below  
Standard: JB/T8389 issued by Ministry of Machinery Industry



- ▶ Viewing Angle Measurement: refer the figure below  
Standard: JB/T8389 issued by Ministry of Machinery Industry





**SCREEN MAINTENANCE & PROPER OPERATING CONDITIONS**

- The screen surface may be cleaned with warm water and a soft cotton cloth.
- To prevent marring or smudging the screen surface be careful no to touch the screen surface with your fingers or any object (i.e. pointing device)
- Do not display or store your screen in direct sunlight.
- Do not display your screen in front of a door, window, fan or heating or cooling vent as air flow will disrupt your viewing experience, and direct sunlight could cause fading.
- Handle the screen carefully to avoid damage and prolong the life of your screen.

---

---

---

---

---

---

---

---

---

---



