

StudioJet 50/100

Installation Instructions for 64-bit Driver for Windows Vista, Windows 7



Windows Vista 64-bit

- Download the driver from www.recordexusa.com/studiojetdriver_64bit.zip.
- Unzip the driver package and save it to a local disc or removable media.
- Connect the printer to your computer using the USB cable (make sure printer is powered on).
- When the **Found New Hardware** wizard opens follow these steps:
 - Click Locate and Install Driver Software
 - Click I don't have disc. Show me other options.
 - Click Browse my computer for driver software
 - Browse to the location of the unzipped driver package, and click next.
 - Windows will prompt that it can not verify the publisher of the driver. Click Install this driver anyway.

Windows 7 64-bit

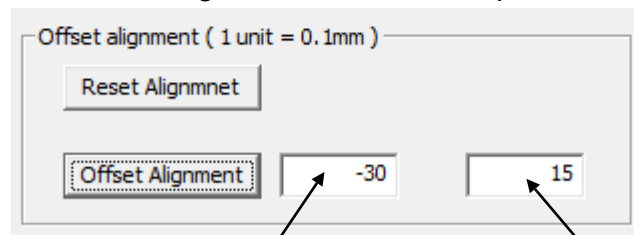
- Download the driver from www.recordexusa.com/studiojetdriver_64bit.zip.
- Unzip the driver package and save it to a local disc or removable media.
- Connect the printer to your computer using the USB cable (make sure printer is powered on).
- Manually initiate the driver installation
 - Click Start, then Right-click on Computer
 - Click Device Manager
 - Double Click on "Other Devices" to expand the group
 - Right Click on "recordexstudiojet 50" and select "Update Driver Software"
 - Click "Browse my compute rfor driver software"
 - Browse to the location of the unzipped driver package, and click next.
 - Windows will prompt that it can not verify the publisher of the driver. Click Install this driver anyway.
 - Wait for Windows to complete driver installation.

Correcting Alignment

Printers manufactured before January 2010 may require a one-time alignment correction. Follow these steps to determine if your printer will need re-aligned, and to adjust the alignment settings.

Testing for proper alignment

- Open the printers folder by typing "printers" into the start search box and pressing enter.
- Right click on the StudioJet printer and select "Printing Preferences"
- Click "Printer Services"
- Click "CD/DVD Printer Alignment Service"
- Click "Test Print"
- Evaluate the printed alignment test disc. If the test pattern is centered on the disc then there is no need to realign the printer. If the test pattern is shifted off center to the right and down then the printer needs to be realigned.
- Enter the following Values **-30** and **15** in the two offset alignment boxes and then click "Offset Alignment".
- Click "Test Print" to evaluate the change in alignment. If the test pattern is still off center then proceed to modify the offset alignment until the test pattern is centered on the disc.

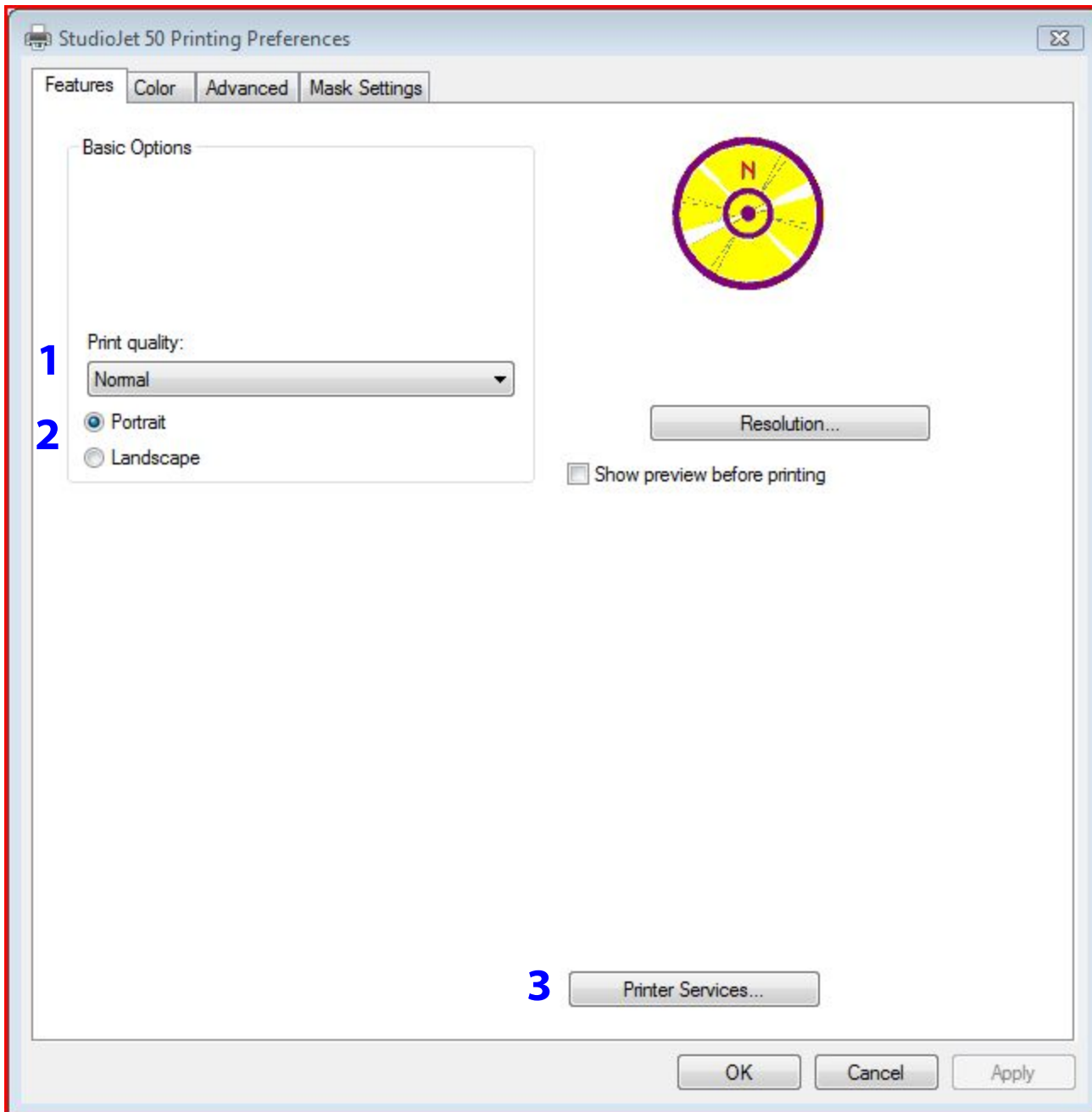


Positive values
shift image right,
negative values
shift image left.

Positive values
shift image
down, negative
values shift up.

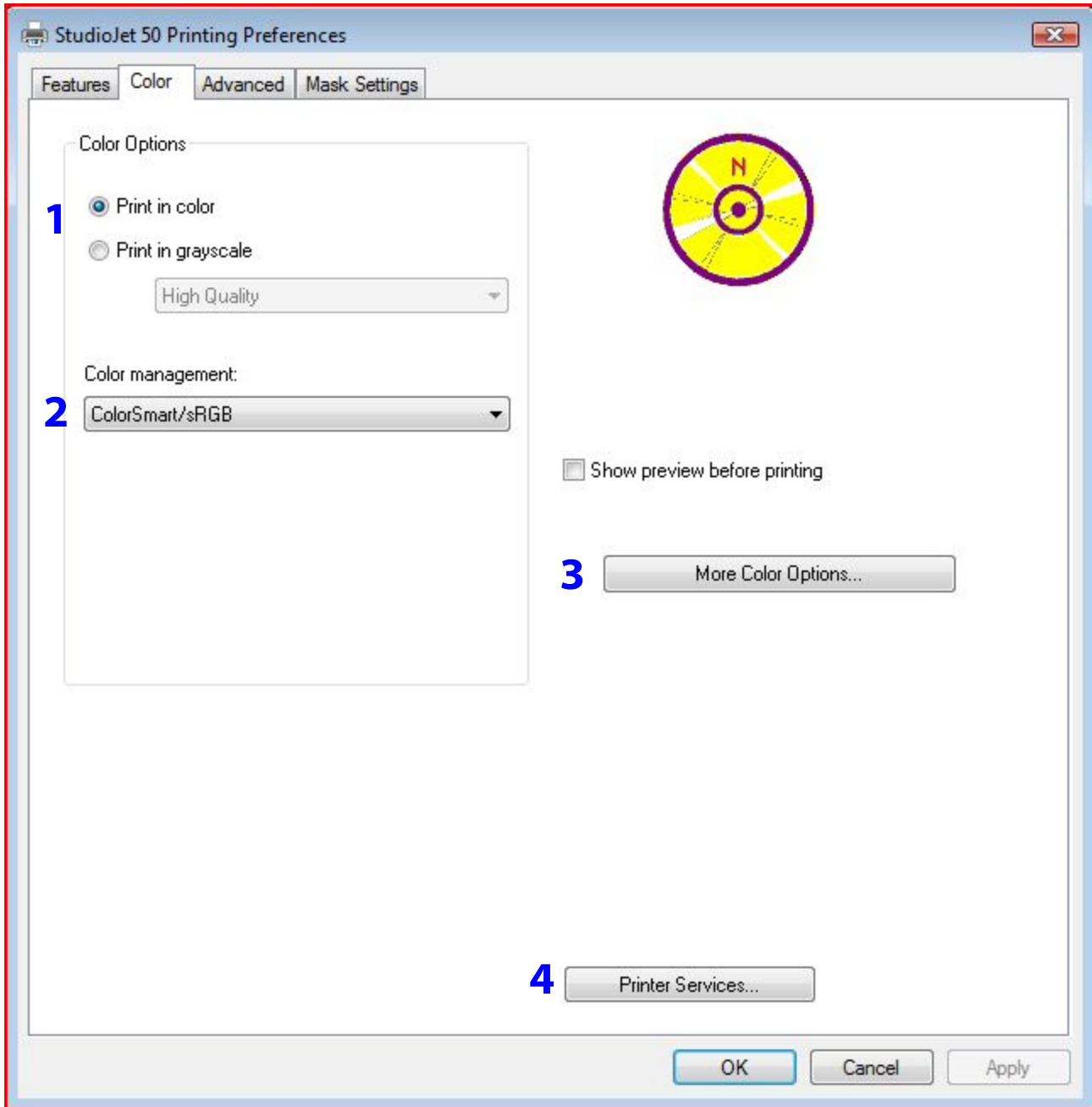
See page 2-7 for additional information on using driver services.

Printing Preferences: Features



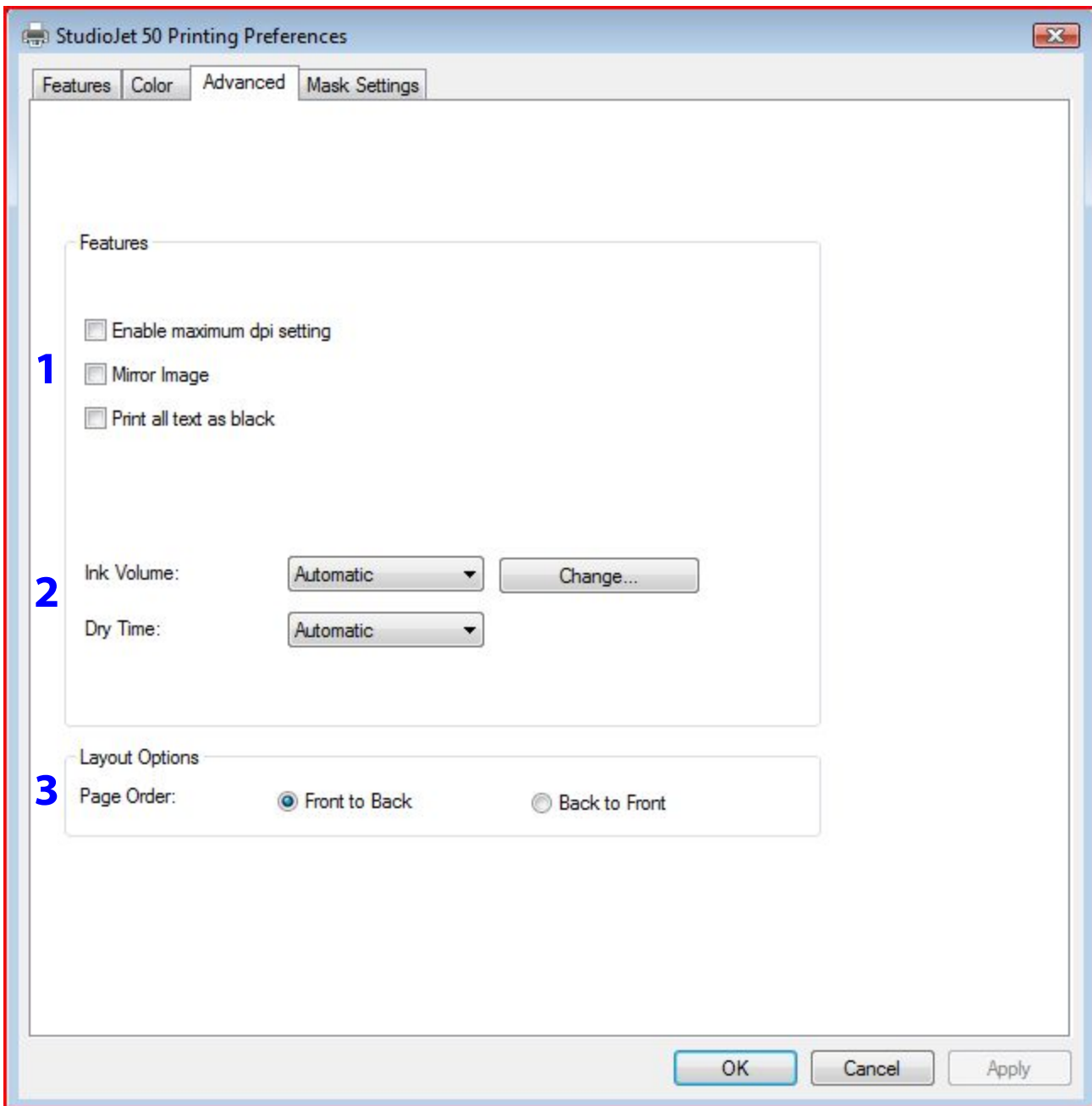
#	Description
1	Set the print quality: fast draft, fast normal, normal, best
2	Set layout (we recommend leaving this at portrait)
3	Access Printer Services: Test Print, Alignment Offset, Estimated Ink Level

Printing Preferences: Color



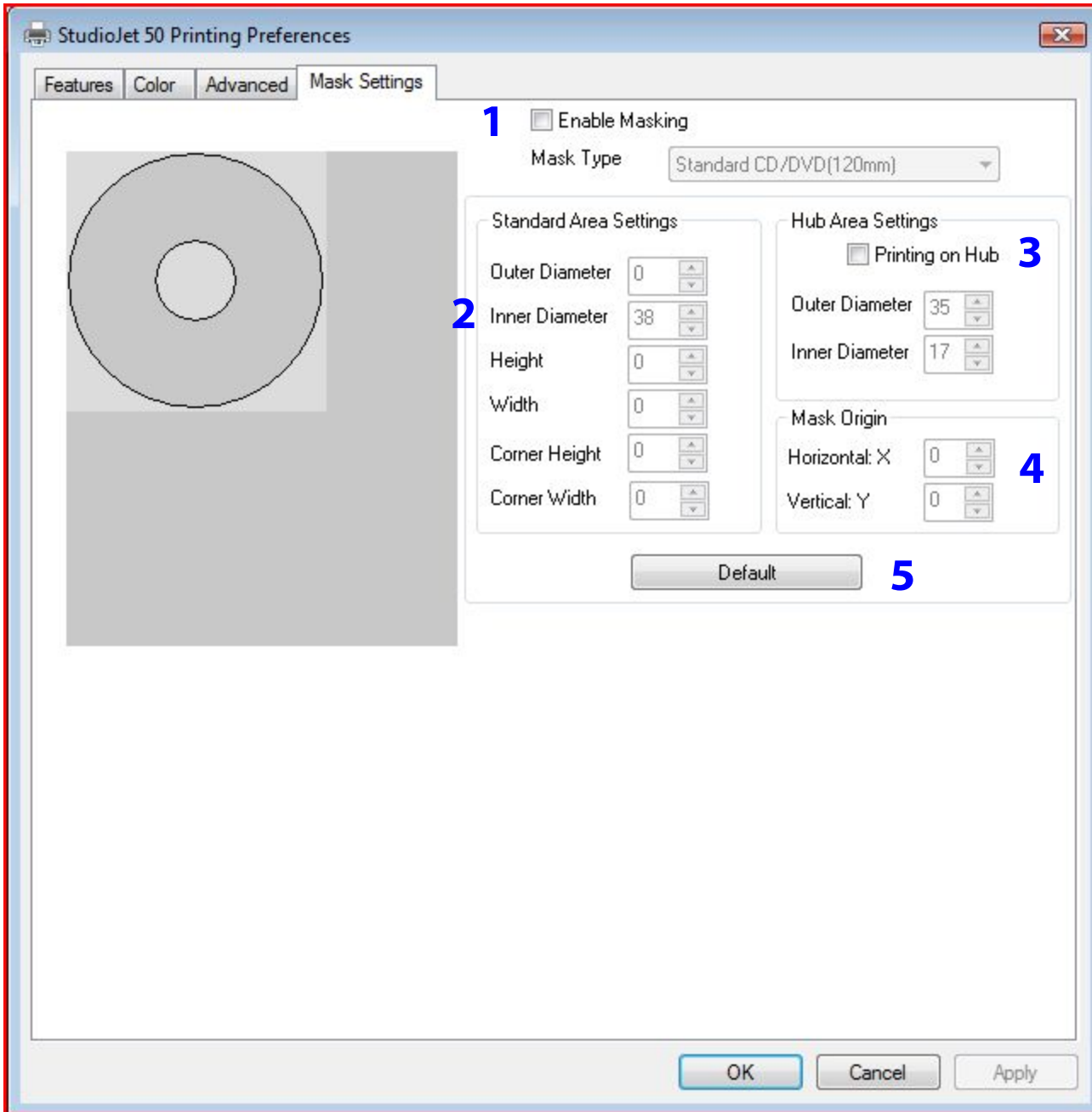
#	Description
1	Set color options: Color, Grayscale
2	Select from preset color management profiles (default recommended value is ColorSmart/sRGB)
3	Manually adjust color levels as well as Brightness, Saturation and Color Tone
4	Access Printer Services: Test Print, Alignment Offset, Estimated Ink Level

Printing Preferences: Advanced



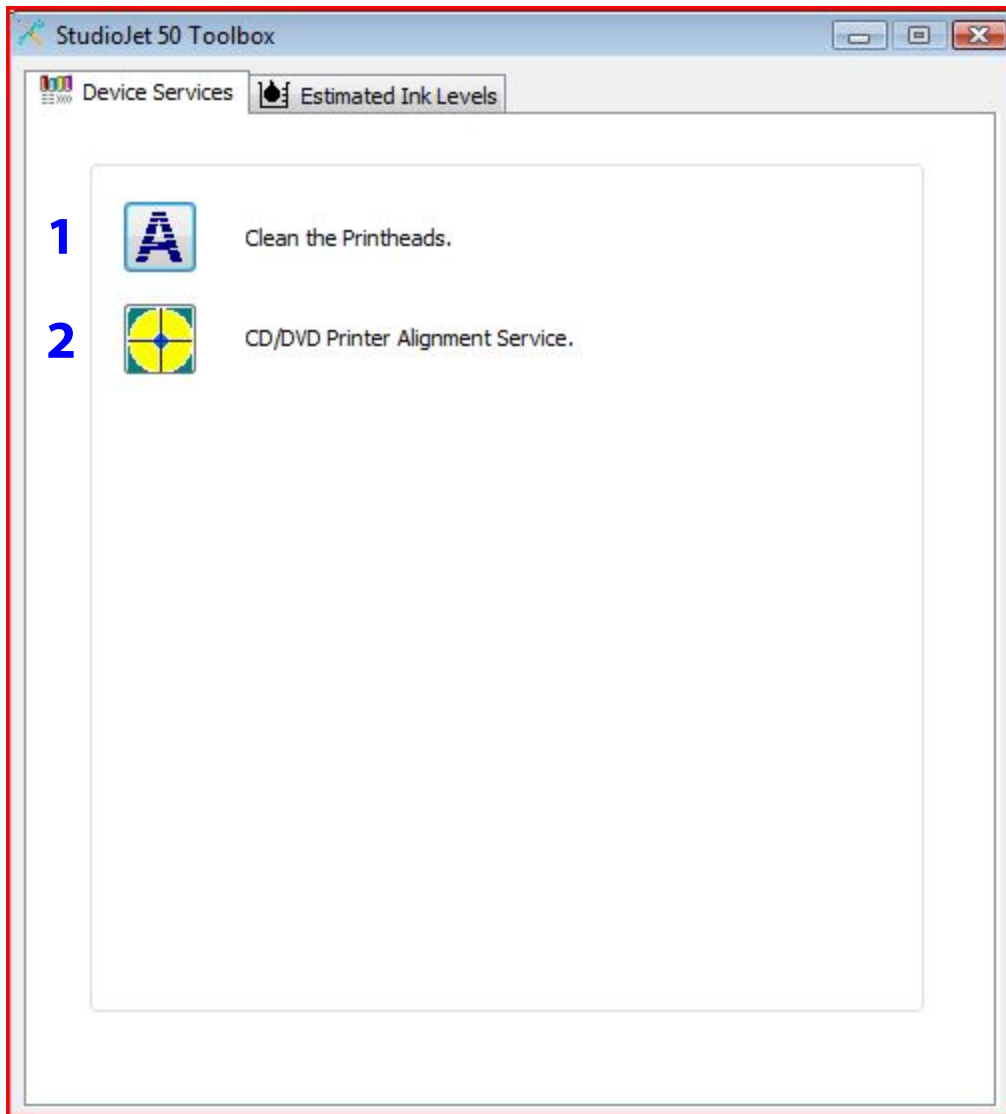
#	Description
1	Enable advance features: maximum dpi printing (will take much longer to print), mirror printed image, print all text as black.
2	Modify ink volume and dry time settings. Reducing ink volume may save ink.
3	We recommend leaving the layout option set to "Front to Back"

Printing Preferences: Mask Settings



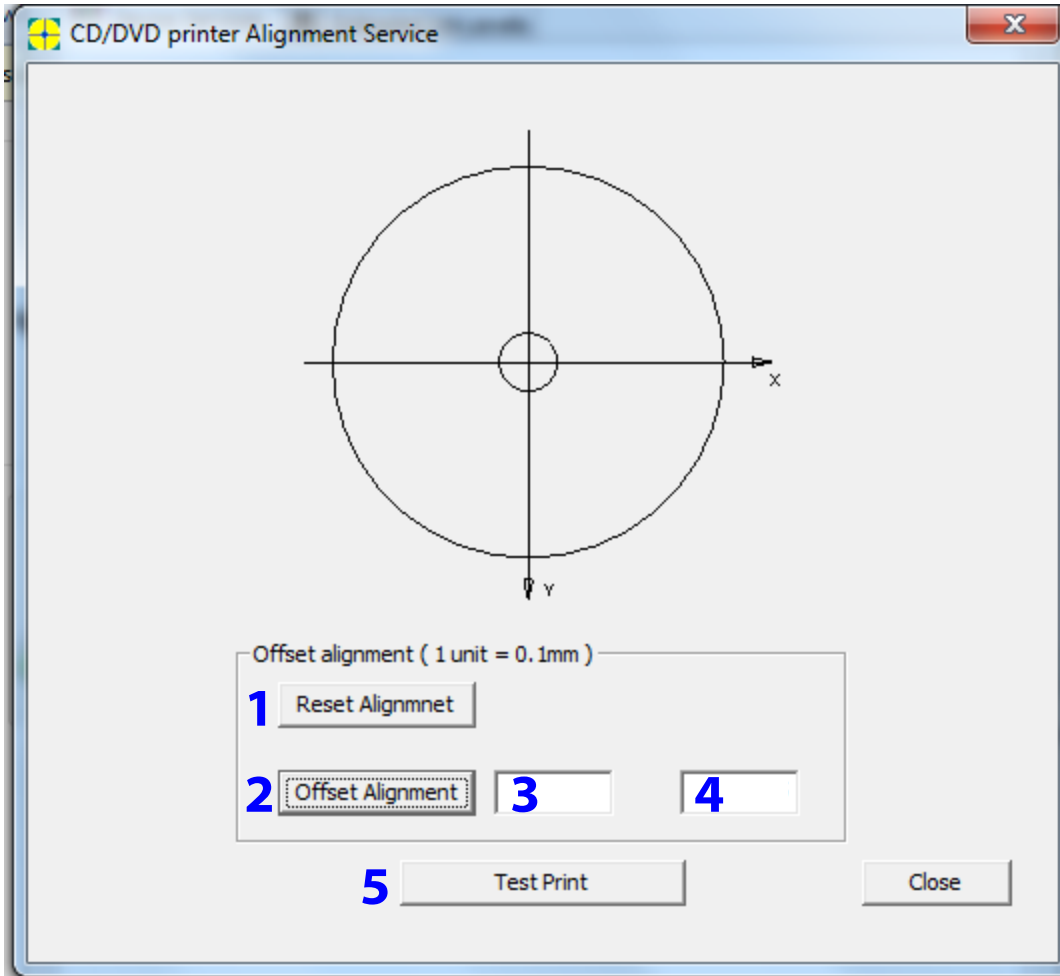
#	Description
1	Check box to enable mask printing. We recommend that mask printing is enabled.
2	We recommend the following Default Settings: For non-hub printable media: Outer Diameter: 118 Inner Diameter: 38 For hub printable media: Outer Diameter: 118 Inner Diameter: 35 Height, Width, Corner Height, Corner Width – set to 0
3	Check box to enable hub printing (for hub printable media) Outer Diameter: 35 Inner Diameter: 17
4	Mask Origin. Setting should be left at x=0, y=0
5	Reset to driver defaults.

Printing Preferences: Features/Printer Services/Device Services



#	Description
1	Cleans print heads. Recommended if printer cartridges are thought to require cleaning.
2	Access the Printer Alignment Service.

Printing Preferences: Features/Printer Services/Device Services/CD/DVD Printer Alignment Service



#	Description
1	Reset to default alignment
2	Click to send offset values entered into boxes (3 and 4) to the printer memory.
3	X-axis Offset Value: + values shift image right, - values shift image left
4	Y-axis Offset Value: + values shift image down, - values shift image up
5	Click to print a test pattern on printable media. This test pattern is helpful for evaluating printer alignment.